



STATEMENT OF QUALIFICATIONS



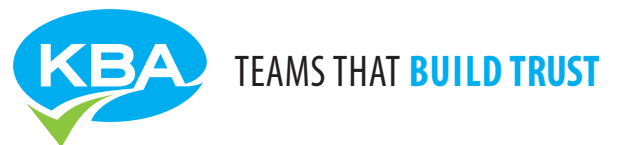
2022



SAFETY MATTERS

At KBA we value people, relationships, and community. One way we demonstrate our commitment to this core value is providing a safe work environment and maintaining a culture of working safely. Employees incorporate safe work practices into each task, thereby creating an inherently safe environment. Our Accident Prevention Program is based upon identifying and avoiding hazards. We train employees and host safety awareness activities monthly. Working together we can enjoy healthy and active lives.





COMPANY PROFILE *A Purpose-Built Firm*



A Purpose-Built Firm

Employee-Owned Small Business

KBA is focused on Construction Management services. We are a firm purposefully structured to support our project teams and clients.

KBA, Inc. is respected as one of the largest and most capable Construction Management (CM) firms in the Northwest. Since 1994, KBA has specialized in SMART & STRATEGIC® management of public and private projects. KBA's services include:

- Construction Management (CM)
- Project/Program Management
- Specialty Services

Areas of Expertise

KBA has contributed to the delivery of projects amounting to more than \$10 billion in construction value within the following market sectors:

- Roads and Utilities
- Bridges and Highways
- Transit
- Water and Wastewater

KBA has talent and depth. With 70+ field personnel, KBA selects the right person for the task at hand. Our depth of talent provides both choice and redundancy.

KBA Innovation

KBA works for owners and clients that seek innovation, dedication, and commitment from their Construction Management consultant. From pre-design to close-out, KBA delivers seamless coordination, innovative solutions, and proactive risk management. Some of the differentiators that set KBA apart include:

- QA/QC audits and Best Practices benchmarking
- Workflow Enabled SharePoint document control system
- Company culture of "Project First" actions

Clear Communication

Good communication is the hallmark of sound construction management practices. We excel at communicating with contractors, designers and owners, as well utilities, citizens, communities, and businesses to coordinate and resolve construction issues. We focus on "Project First" as a common interest. We develop an understanding of what is important and critical to each stakeholder and identify the best communication channels to facilitate timely dissemination of information.



Practical Approach to Construction Challenges

We embrace a practical and realistic approach to addressing construction challenges, and we work collaboratively with our clients to address individual challenges as they arise. Through the incorporation of many lessons learned and process improvements, we thrive on intercepting and solving complex issues. Our pragmatic approach contributes to KBA's reputation as a SMART & STRATEGIC® CM firm.

Proactive Risk Management

Risk Management is a core competency for KBA as CM specialists. We've amassed the working experience and background to assess potential construction risks, and we've developed processes to proactively monitor and manage risk. These processes help minimize the likelihood of cost and schedule impacts to projects.

Skilled Personnel

KBA employs highly qualified project managers, resident engineers, inspectors, office engineers, documentation control specialists, and project administrators. Additionally, our project administrators contribute in the areas of value engineering, constructability review, project controls, cost, schedule, contracts, partnering, and permitting. With approximately 100 staff members, KBA is small enough to be flexible and responsive, yet big enough to manage large and complex projects. KBA professionals bring seasoned expertise and a can-do attitude to their projects, as well as a proven approach to anticipating

and quickly resolving construction issues. KBA has talented professionals at all levels of CM who can supplement project teams or provide specialty services as project needs fluctuate.

Advanced Systems and Tools

KBA's SharePoint CM Tool offers optimal project document control and communication with minimal start-up time and cost. It is highly customizable, completely searchable, and workflow-enabled. It helps control permissions, securities, visibility of information, tasks assignment for document reviews and approvals, and produces reports. KBA developed an easy-to-use Microsoft Access pay ledger for tracking bid items per pay schedule and preparing monthly progress estimates. Daily entry allows our Resident Engineers and Office Engineers to search bid items, field note records, descriptions, dates, and quantities, and to keep payment on track, audit ready, and error free, while facilitating a straightforward project closeout.

Over 25 Years of Providing CM Services

We are proud of what we have been able to accomplish since 1994. KBA started as a small Construction Management firm, focused on residential planned communities. We specialize in Smart and Strategic construction management of public works projects, contributing to the delivery of \$10 billion of the area's most complex and technically challenging projects. Clients trust us to provide the quality, value of service, and collaborative problem solving that support positive outcomes. We look forward to being the CM firm of choice for Local Agencies throughout Washington.

- Engaged in national and local chapters of professional organizations such as WTS, APWA, ACEC, and NUCA
- Recognized for our commitment to diversity
- Developed lasting relationships throughout our community

KBA EARNED THE ACEC-WA (AMERICAN COUNCIL OF ENGINEERING COMPANIES) EXCELLENCE IN INCLUSION AWARD EVERY YEAR SINCE 2019. THIS PRESTIGIOUS AWARD IS GIVEN TO ACEC MEMBER FIRMS THAT ARE CHAMPIONS IN ADVANCING DIVERSITY AND FOSTERING A CULTURE OF INCLUSION WITHIN THEIR WORKFORCE, THEIR TEAMS, AND THE CLIENTS THEY SERVE.

Construction Management

KBA's full service construction management capabilities include contract administration, project documentation, inspection, construction coordination, analysis, and reporting. KBA's teams understand and share the Owner's vision, and actively engage at all levels of the project to address design conflicts and changed conditions, coordinate and/or expedite necessary third-party work, and communicate project needs. KBA's experienced staff anticipates field problems, articulates issues, and brings solutions forward to keep construction moving.

Contract Administration and Change Management

- Administer contracts
- Coordinate among agencies having jurisdiction
- Resolve, negotiate, and document changes
- Perform dispute resolution and claims analysis
- Provide quality management/quality verification (QM/QV) services

Inspection, Documentation, and Quality Assurance

- Monitor contractors' activities for compliance with contract documents and environmental permits
- Coordinate with utilities, agencies, and property owners/tenants
- Maintain records of materials and accepted work
- Maintain digital audit-ready documents
- Problem-solve when challenges arise
- Practiced in Federal Aid documentation standards

Project Scheduling, Controls, and Reporting

- Analyze contractors' baseline and progress schedules
- Forecast costs, document progress, and maintain ledger of work accepted for payment
- Assess earned-value of work-in-progress
- Reporting and forecasting



Project/Program Management

Clients find it extremely valuable to involve KBA early in the planning, design development, and pre-construction phases of their capital programs. KBA identifies opportunities to more efficiently deliver projects, condense schedule durations, provide mechanisms to manage project risk, and identify and resolve potential issues. Deliberate and purposeful project and program management saves time and money.

Program Planning

- Scope, quantify, and prioritize projects
- Strategize phasing, sequencing of work, and site utilization
- Recommend delivery method and procurement approach
- Define program scope and refine change control systems
- Prepare project funding plan and cash flow analysis

Design Phase Services

- Provide leadership to resolve design phase issues
- Assess project risk and identify management strategies
- Develop baseline schedule as basis for contract time
- Write, illustrate, edit, and publish written reports
- Collaborate on charrette panels

Pre-Construction Services

- Assist with preparation of bid documents
- Respond to bidder questions and issue addenda
- Obtain and evaluate bids
- Perform readiness reviews of rights-of-way, permits, construction staging, and third party utility agreements
- Coordinate public outreach programs

Specialty Services

KBA's experienced and qualified team members are widely recognized and valued locally and statewide. Our clients leverage KBA's specialty services to improve project design and delivery, reduce risk and cost, and trouble-shoot or avoid problems. KBA understands that every project is different, and we are adept at flexing our specialty services to meet the specific needs of our clients.

KBA believes strongly in the value of constructability reviews. This process typically pays for itself in cost savings while providing clarity, reducing risk, and making PS&E bid packages more complete. Our staff have performed over 150 constructability reviews in the past two years for some of the region's largest transportation projects.

Constructability/Biddability

- Conduct independent review of plans and specifications
- Validate quantities and payment terms for major bid items
- Perform a "plans-in-hand" review to confirm situational fit
- Review and advise on efficiency of construction staging
- Prepare risk assessment and identify critical issues

Consulting/Advising

- Facilitate partnering workshops
- Serve on Value Analysis panels
- Write project and construction management and administrative procedure manuals
- Serve on Dispute Review Boards
- Manage start-up testing and commissioning
- Conduct quality assurance (QA) audits

Teaching/Training

- Deliver training of construction practices to client and contractor organizations
- Develop and write technical documents
- Provide PlanGrid training
- Provide SharePoint training

PROJECT DELIVERY METHODS *Trusted to Succeed*

Design-Bid-Build (DBB)

KBA is adept at our role on a DBB project, whether we are performing full CM services, providing added support to the owner, or working as a sub to the Engineer of Record for CM services. We have deep experience at keeping our projects on schedule and providing the owner with the information needed to make informed decisions on project change orders.

- Pre-Construction Services
- Construction Administration and Management
- Funding Requirements Management
- Project Closeout



SOUND TRANSIT OPERATIONS AND MAINTENANCE FACILITY - EAST
BELLEVUE, WA

Design-Build (DB)/ Progressive Design-Build (PDB)

DB projects are more efficient and can be completed in a shorter period of time, as construction can commence prior to completion of the Design process. KBA has the knowledge and experience to keep projects utilizing this method of delivery on track, while providing efficient document closeout.

- Quality Management Plan (QMP) Formulation
- Quality Management Services
- Administer Design-Builder owner agreement
- Design Management
- Construction Management

General Contractor/ Construction Manager (GC/CM)

GC/CM is a project delivery method that facilitates collaboration among the owner, designer, and contractor by providing feedback throughout the design phase. This method reduces cost through acceleration and sharing of lessons learned by the contractor and owner. Communication is a core competency shared by all at KBA. Our communication skills make us a preferred partner for this method of project delivery.

- Pre-construction Services
- Construction Services
- Owner's Representative

**CITY OF OAK HARBOR
CLEAN WATER TREATMENT FACILITY**
OAK HARBOR, WA

2020 Regional Best Projects
Water/Environment Best Project,
Northwest Region, from Engineering
News-Record Magazine (ENR)

2020 National Recognition Award
Engineering Excellence Award, from
the National American Council of
Engineering Companies (ACEC)

2019 Project of the Year
Environment More than \$75 Million
Category, from the National American
Public Works Association (APWA)

2019 Project of the Year
Environment, More than \$75 Million
Category, from the Washington
Chapter of the American Public Works
Association (APWA)

2019 Distinguished Project Award
Innovation and Achievement in
Sustainability, from the Northwest
Construction Consumer Council
(NWCCC)

2019 Project Achievement Award
Construction Management, from
the Pacific Northwest Chapter of the
Construction Management Association
of America (CMAA)

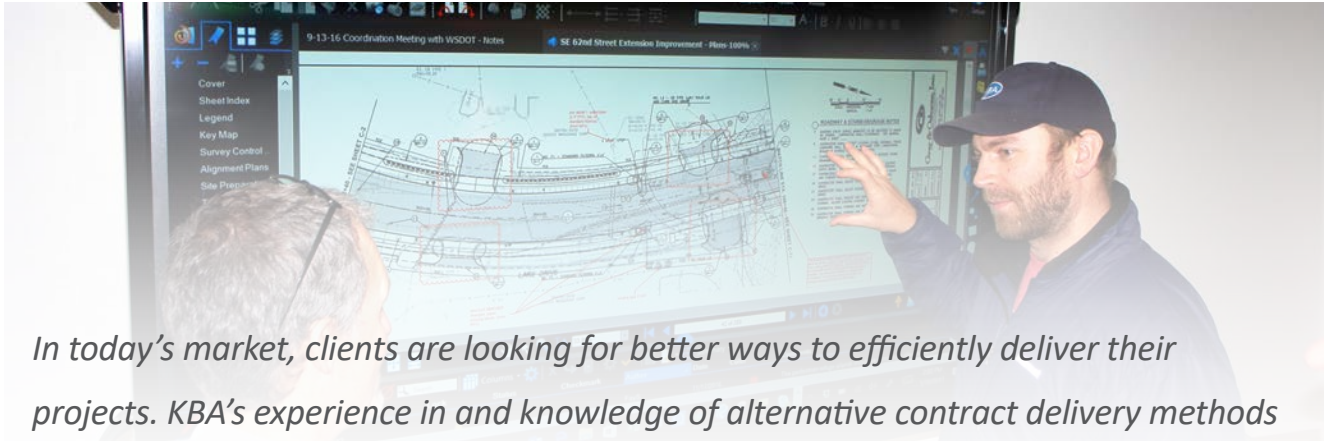
2018 Excellence in Concrete Construction
Infrastructure, Non Transportation
Category, from the Washington
Aggregates and Concrete Association

2018 Excellence in Concrete Construction
Infrastructure, Non Transportation
Category, from the Washington Chapter
of the American Concrete Institute (ACI)

*We are honored to have provided
full Construction Management
and Inspection services to this
award-winning project!*



PROJECT DELIVERY METHODS *Trusted to Succeed*



In today's market, clients are looking for better ways to efficiently deliver their projects. KBA's experience in and knowledge of alternative contract delivery methods gives our clients the flexibility to leverage the most appropriate delivery method to successfully complete their project.

PROJECT EXPERIENCE



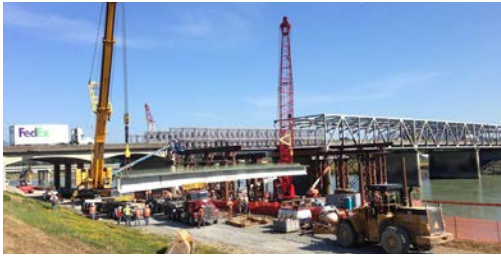
SOUND TRANSIT
BELLEVUE, WA

OPERATIONS AND MAINTENANCE FACILITY - EAST

The OMFE project is part of the ST2 Plan and will house, maintain, and deploy the light rail vehicles as the system expands from 16 to 50 miles by 2023. The facility will include a 96 Light Rail Vehicle storage yard, 14-bay maintenance facility, and offices to accommodate employees. In addition to the civil construction for the yard and maintenance/office facility, the work includes the installation of train control for the yard and yard entrance, traction power substations (both yard and shop), overhead catenary system (OCS), communications, and SCADA. The project also includes the design and construction of the interim East Side Bike Trail along the former BNSF rail corridor from State Route 520 to the future Hospital Station south of the project site. KBA is the prime consultant, providing **Design-Build** Project Management services.

KBA is leading a team providing design review and construction management for the maintenance facility, storage tracks, systems work, and associated features. KBA's team is providing quality verification inspection of the Design-Builder's QC/QA program. This project is in the final stages of completion and will be fully functional in 2021.

Trusted to Succeed **PROJECT DELIVERY METHODS**



WSDOT
MOUNT VERNON, WA

SKAGIT RIVER BRIDGE PERMANENT BRIDGE REPLACEMENT

KBA provided Quality Management and Quality Assurance service for this \$7 million WSDOT Design-Build project that replaced the temporary I-5 Skagit River span 8 with a new structure designed to meet current standards. The **Design-Build** delivery method was critical in the quick completion of this project to open up a critical piece of local infrastructure.



CITY OF OAK HARBOR
OAK HARBOR, WA

CLEAN WATER TREATMENT FACILITY

KBA provided Construction Management and inspection services for this \$150 million **GC/CM** project (**and the first GC/CM Heavy Civil delivery project in the State of Washington**) that replaced two aging wastewater treatment facilities with a new clean water treatment facility meeting modern standards for reliability and performance. This project provided construction of a new membrane bioreactor (MBR) facility to replace the City's existing facilities (lagoon and rotating biological contactor) to provide continued reliable wastewater service to the community of Oak Harbor while protecting and preserving the surrounding environment (Puget Sound, Oak Harbor, and Crescent Harbor).

Project challenges included: complex geotechnical conditions; location relative to the 100-year flood plain; adjacent to well-used public spaces; potential for cultural resources to be discovered during construction; and adjacent to existing commercial and other heavy traffic areas. These issues were addressed with constant communications with project stakeholders. This project has been recognized by numerous agencies with awards for design, construction, and creative implementation.



SOUND TRANSIT
SEATTLE, WA

UNIVERSITY LINK LIGHT RAIL, UW STATION (U250)

KBA was part of the Seattle Tunnel and Rail Team Joint Venture (START JV) CMC on the University of Washington Station Link Light Rail project. The University of Washington Station (UWS) involved top-down construction for an underground transit station located between Montlake Boulevard and Husky Stadium at 100 feet below grade. Tight logistics, innovative construction methodology, and its status as Sound Transit's first **GC/CM** contract made it a very challenging project to manage.

Pre-construction services provided by KBA included assistance in document preparation, MACC negotiations, early selection of mechanical and electrical subcontractors, bid package preparations, value engineering, constructability review, and risk management assessments.

SKILLED PERSONNEL *Teams that Build Trust*

Teams that Build Trust

KBA brings value to projects through teamwork. We seek to maintain a workforce reflective of the diversity of the communities in which we work.

KBA staff members are committed to superior quality and value of service. Our team members enjoy working collaboratively with each other and our clients to meet project goals.

KBA’s reputation for excellence stems from our uniqueness of talent, the value we deliver, and our ability to consistently provide practical solutions. Clients select KBA not just for our firm expertise, but more importantly, for the caliber and passion of our people.

KBA’s Quality Assurance program provides an added benefit to clients. With a range of expertise on staff, KBA monitors

the quality of construction management services through client interviews, project showcases, record audits, and job site visits. When gaps arise, KBA has the resources to provide mentoring and training to bridge these gaps. KBA is passionate about the quality and consistency of service delivery and makes resources available to clients, such as lead representatives in Quality Assurance.

Our past performance is directly tied to the diligent, ongoing training and development of our staff. Our people are the best in the industry. They are led, supported, and mentored by a caring, proactive, and professional group of principals who steadfastly manage the delivery of best-value services.

KBA BY THE NUMBERS

2	20	20	36	101
CERTIFIED PUBLIC INFRASTRUCTURE INSPECTORS	WSDOT CERTIFIED INSPECTORS	CERTIFIED EROSION AND SEDIMENT CONTROL LEADS	PEs CCMs PMPs	TEAM PLAYERS

FUNDING SOURCES

FHWA
FTA
Additional Federal
State
Local/Municipal

CLIENT TYPES

State Government/Agency
Private Development/Other
City/County
Transit/Port

Teams that Build Trust **SKILLED PERSONNEL**



KBA'S CORE VALUES

Professionalism and integrity direct our actions.
We value people, relationships, and community.
Our passion stimulates creative solutions.
We deliver quality results.

KBA REGIONAL CONTACTS



KBA Mount Vernon | Dave Mohler | 425-214-5064

KBA Seattle | K. Adams | Paul Garrett | Kevin Stoll | 425-214-5082

KBA Bellevue | Kris Overleese | Roger Smith | Mark Fuglevand | Sam Schuyler | 425-455-9720

KBA Tacoma | Cameron Bloomer | 206-819-7148

SKILLED PERSONNEL *Corporate Leadership*

KRIS OVERLEESE
PE
President

Kris brings 25 years of experience as a Public Works Director, City Engineer, Capital Projects Manager, and Management Analyst to her position as KBA's President. She excels at policy and procedure development, project management, innovative design, federal funding, grant management, resource management, and communication. Kris currently serves on the Foundation Board for the Lake Washington Institute of Technology. She is also a Mentor for the Washington State Opportunity Scholarship and was recently appointed to the Evergreen Hospital Foundation Board of Trustees.



K. WENDELL ADAMS
PE
Principal

K. has 37 years of experience with public works projects. As a City Engineer for much of his career, his areas of expertise include supervising and managing the construction, operations, and maintenance of city capital improvement projects. He is an active member of APWA and is deeply involved with the public works community. K. advises local agencies on project management, project funding, and construction management.



ROGER SMITH
PE
Principal

Roger has 33 years of experience with complex bridge and heavy civil construction projects throughout the Western United States. With a background in construction management and public project design, he excels at coordinating with multiple agencies during all phases of the project. Roger's depth of experience allows for outstanding constructability reviews, as well as respected contract positions as a Disputes Review Board (DRB) member.



MARK FUGLEVAND
PE
Principal

Mark has 37 years of extensive experience as a heavy highway contractor, assisting engineers and owners in the successful outcome of their projects. He is a past President of the National Utility Contractors Association. Mark enjoys solving and facilitating solutions to the problems and challenges that every project encounters. Mark's emphasis as a project manager at KBA is on WSDOT and municipal clients in King and Snohomish Counties.



Corporate Leadership **SKILLED PERSONNEL**



Kris has over 40 years of experience as a Construction Manager on major civil and structural projects. Kris founded KBA in 1994, and under her leadership, KBA has become the region's premier Construction Management firm. Kris has been an active leader in the engineering community and has held positions for local chapters of organizations such as American Council of Engineering Companies (ACEC), American Public Works Association (APWA), and Construction Management Association of America (CMAA).

KRISTEN BETTY
PE
Founder
Board Chairman



Julie has 40 years of experience in the A&E industry. As Chief Financial Officer, Julie is a key advisor and strategic partner with regard to KBA's business practices. Her well-rounded arsenal of experience includes corporate accounting, project delivery, system conversions, 401(k) and ESOP plans, human resources, benefits, and employee relations. Julie is a Certified Non-Professional ESOP Fiduciary and a member of the Society for Human Resource Management.

JULIE CAMPBELL
Chief Financial Officer
ESOP Trustee



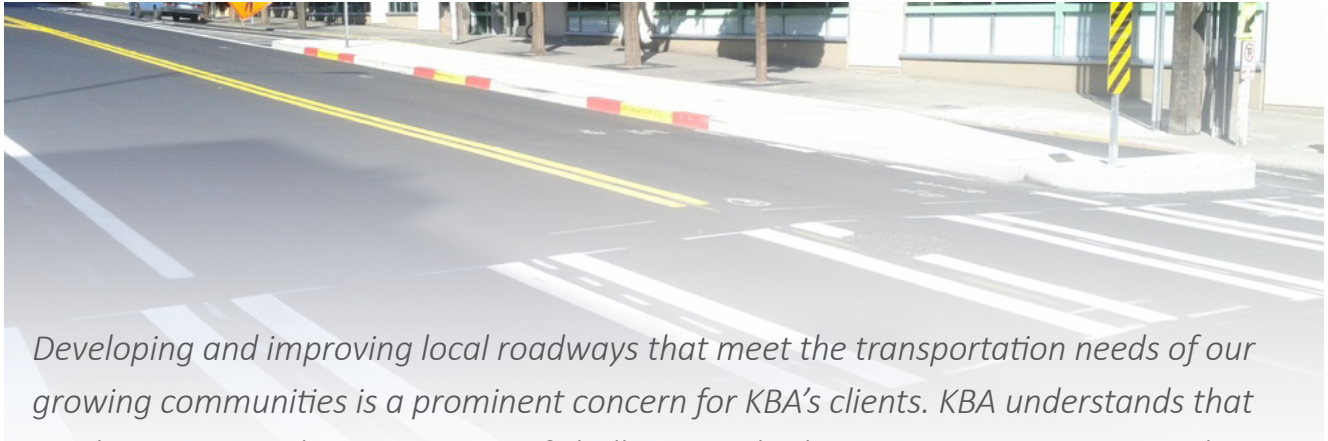
Paul brings over 25 years of experience as an accomplished Resident Engineer, Project Manager, and Inspector. He has extensive expertise in all phases of construction, environmental, and landscape management. Paul has a passion for adopting new technology to improve outcomes. Paul leads project teams to deliver quality results while integrating methods to save both time and cost during construction.

PAUL GARRETT
CCM, CPII
Principal



Dana is both analytical and a resourceful, creative thinker, skilled in relationship building, problem solving, and organization and process improvement. Her skills include multichannel marketing; communications; content management; digital, print, and social media; and writing and editing. She has significant expertise in business development, business intelligence, and project management. Dana is experienced in market research, data mining, and trend identification, as well as budgeting, vendor management, and contract negotiation.

DANA TAVENER
Marketing Manager
ESOP Trustee



Developing and improving local roadways that meet the transportation needs of our growing communities is a prominent concern for KBA's clients. KBA understands that road construction has its own set of challenges, whether constructing a new road through timber, widening a quiet residential street, or reconstructing a heavily traveled arterial in a busy metropolitan area.

ROADS AND UTILITIES

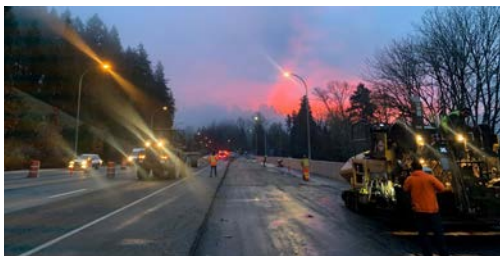


CITY OF SEATTLE
SEATTLE, WA

2020—IN PROGRESS

DELRIDGE RAPIDRIDE H LINE

KBA provided constructability review during design and is currently providing full construction management services for this \$55 million project that constructs infrastructure for a Bus Rapid Transit network from the West Seattle Bridge to SW Henderson Street. Work includes construction of RapidRide transit stops with shelters, tech pylons, lighting, ORCA readers, and amenities; addition of a southbound protected bike lane; and reconstruction of concrete pavement. Utility work includes undergrounding City Light's 26kV line including trenching, handholes and vaults, and electrical duct bank installation; water main and pressure reducing valve; sanitary sewer main; and storm drainage conveyance and water treatment vaults. The project includes modifying 14 existing traffic signals, two new RRFB signals, and ITS infrastructure along Delridge Way SW.



CITY OF BOTHELL
BOTHELL, WA

2019—2022

SR 522 IMPROVEMENTS, PHASE 3

KBA provided constructability review, scheduling, construction management, and inspection services for this \$21.5 million road improvement project. The 4,000 LF project provided road improvements and Business Access and Transit (BAT) lanes from the end of the Stage 1 and 2 improvements in Bothell and connects to the same facilities in Kenmore. Key elements included widening of general purpose lanes; adding BAT lanes in each direction; access management; center medians; interconnection of signals; sidewalk; curb and gutters; retaining walls; street illumination; drainage improvements; landscaping; and utility undergrounding.



SEATTLE DOT
SEATTLE, WA

2019—2021

2019 AAC PACKAGE 1 (N 40TH, N 50TH, GREEN LAKE, AND N 80TH)

KBA provided construction management and inspection services for this \$23.2 million multiple roadway restoration project in the Wallingford and Green Lake areas. The project included work on N 40th, N 50th, W and E Green Lake Drive N and E, Green Lake Way N, Green Lake Drive N, and N 80th Street. Work consisted of roadway panel replacement; grind and overlay; 550 curb ramps; new, enhanced, or upgraded bike lanes; sidewalk repair and replacement; new signals and lighting; and SPU utility improvements. The project had over 150 traffic control plans and involved TESC measures.



CITY OF BELLEVUE
BELLEVUE, WA

2019—2021

124TH AVENUE NE – NE SPRING BOULEVARD TO NE ICHIGO WAY

KBA provided construction management services in the BelRed area for the \$13 million, quarter-mile first phase of widening 124th Avenue NE from NE Spring Boulevard to NE Ichigo Way. With a nine-month road closure to thru traffic, significant coordination with utilities, businesses, adjacent projects, and the public were required to keep business access open while progressing on contract work. The concurrent Sound Transit East Link work at the bridge site resulted in changing site conditions. KBA managed the multiple changes by cultivating great relationships with the contractor, design engineer, and the City of Bellevue.



CITY OF MAPLE VALLEY
MAPLE VALLEY, WA

2019—2020

SR 169 ROAD WIDENING

KBA provided full CM services for the City of Maple Valley's \$4.8 million street widening project. The most notable feature of this project is the use of a soldier pile wall which permitted the addition of a commuter lane, bike lane, and sidewalk. A comprehensive drainage system was installed, as well as a state-of-the-art infiltration system. During KBA's initial review of the project it was determined a few items the designer incorporated into the project were not actually needed based on KBA's knowledge of the area's geological make-up. By eliminating these items (structural soil and pedestrian handrail), we were able to reallocate resources to renovate an entire intersection that was not in the original design. The resulting changes and upgrades were completed within the original timeframe.





CITY OF ISSAQUAH
ISSAQUAH, WA

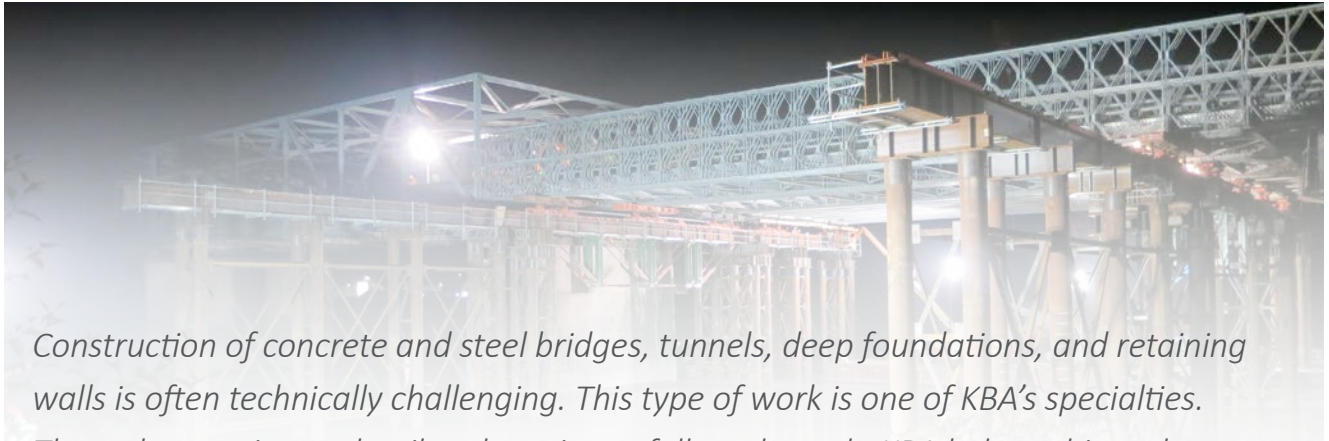
2017—2019

SE 62ND STREET EXTENSION AND BRIDGE

KBA provided full construction management services for the extension of SE 62nd Street from East Lake Sammamish Parkway to Lake Drive. The \$23.6 million project constructed a roadway extension, new concrete girder bridge over protected wetlands, two roundabouts, utility improvements, stream relocation, a multi-use trail connection, and a bike/pedestrian underpass. Before construction began, the contractor proposed to re-design the bridge with 36" diameter pipe piles, 70' and 90' long. When bearing resistance was not achieved as expected, KBA coordinated with the geotech, general contractor, designer, and client to revise the plans and solve the issue in real time. KBA established great relationships with all stakeholders, allowing better communication and collaboration to coordinate real-time resolutions.

 2020 National Project Achievement Award, Construction Management Association of America

 2020 Project of the Year Award, American Public Works Association, Washington Chapter



Construction of concrete and steel bridges, tunnels, deep foundations, and retaining walls is often technically challenging. This type of work is one of KBA's specialties. Through attention to detail and persistent follow-through, KBA helps achieve the desired durability and quality of the structures while minimizing the impacts generated during the intensity of construction.

BRIDGES AND HIGHWAYS

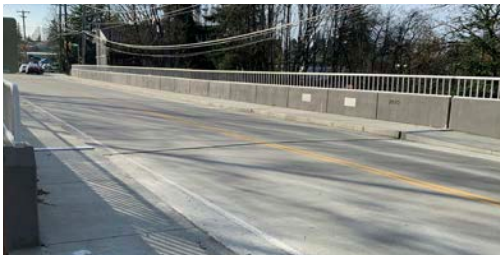


CITY OF KENMORE
KENMORE, WA

2020—IN PROGRESS

WEST SAMMAMISH RIVER BRIDGE REPLACEMENT

KBA is providing construction management and inspection services for this \$28 million project that replaces the southbound bridge across the Sammamish River and constructs new sidewalk and bike facilities on the west side of the road between NE 170th St and NE 175th St. The project also includes new signals at NE 170th St and NE 175th St, new streetlighting, utility undergrounding, and new landscaping. The bridge provides the only route over the Sammamish River in Kenmore. With an average daily traffic volume of 13,000 southbound vehicles, it is also the only north-south route into the City and provides access to SR 522, Kenmore City Hall, and the downtown business center.

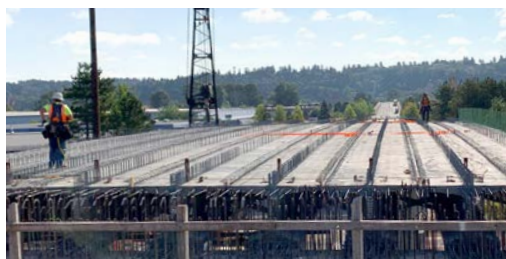


CITY OF BURIEEN
BURIEEN, WA

2019—2021

PETER WESTERN BRIDGE REPLACEMENT

KBA provided full construction management services for this \$4.6 million project that constructed improvements of S 116th Street over an unnamed creek, including installation of a new bridge, storm drainage improvements at the roadway and at the creek levels, reconstruction of approximately 130 feet of the creek, installation of a SEW wall adjacent to the reconstructed creek, HMA paving, striping and signing, and planting.



CITY OF KENT
KENT, WA

2018—2021

KENT 228TH STREET GRADE SEPARATION

KBA provided construction management and inspection services for this \$21 million project for the City of Kent. KBA worked with the Owner and contractor to install a CIPP liner in an existing sewer pipe instead of open cutting when existing utilities were discovered that complicated the contractor's ability to safely shore a trench. KBA also proposed and helped coordinate the use of used geofoam blocks the contractor owned, saving the project cost and keeping usable material from going to a landfill. This project was funded with FHWA, State, and Local dollars.



CITY OF EVERETT
EVERETT, WA

2017—2020

GRAND AVENUE PARK BRIDGE

KBA provided the Resident Engineer and Office Engineer on an integrated team to construct a single-span (257 feet long and 24 feet deep) steel truss bridge. The \$14 million combined utility and pedestrian bridge begins on Port of Everett property atop a 30-foot-high concrete tower with an elevator shaft serving as the west abutment. The bridge spans eastward 40 to 60 feet above SR 529, five BNSF tracks, and a steep 80-foot-high bluff before ending on the east abutment located along the northwest edge of Grand Avenue Park near 16th Street. It carries a 36-inch storm drainpipe and 30-inch combined sewer pipe with existing terminuses at the west end of 16th Street to existing outfalls in Puget Sound. An elevator was constructed to provide ADA compliant access for pedestrians between Grand Avenue Park and the Port of Everett.



CITY OF WOODINVILLE
WOODINVILLE, WA

2018—2019

SAMMAMISH RIVER BRIDGE REPLACEMENT

KBA provided full construction management services on this \$5.8 million project. The work under this contract included improvements to the Sammamish River Bridge. It widened SR 202 from the intersection of 131st Avenue NE to Woodinville-Redmond Road. This segment of SR 202 was widened to 4 lanes by constructing a new 2-lane bridge adjacent to the existing bridge. Railing and sidewalk modifications were also included for the existing bridge. In addition, the project included bike lanes, curb and gutter, and sidewalk installed on both sides of the road.



SKAGIT COUNTY
BURLINGTON, WA

2018—2019

BURLINGTON NORTHERN OVERPASS

KBA provided construction management and inspection services for this \$12 million federally funded bridge replacement project. Project elements included demolition of an existing 1,200-foot long, 72-bent timber trestle (built in 1936), and construction of a three-span prestressed concrete girder bridge with structural earth wall (SEW) approaches. The bridge foundations included 6- and 8-foot diameter drilled shafts, while the approach foundations included the installation of stone columns. This project required high attention to detail and communication/coordination skills as construction was completed over a live BNSF railroad track serving 26 trains per day.



The Puget Sound region is investing in light rail, commuter rail, and bus transit systems, and KBA is assisting clients with construction projects that provide transportation choices for our region. Transit agencies rely on KBA's depth of experience in managing the construction and inspection of transit facilities that help keep local residents moving.

TRANSIT



SOUND TRANSIT
REDMOND, WA

2020—IN PROGRESS

DOWNTOWN REDMOND LINK EXTENSION

KBA is providing construction engineering and inspection services for this \$1.53 billion project that builds a new 3.4-mile light rail link from the Redmond Technology Station to downtown Redmond by 2024. Light rail will travel along SR 520 with two new stations in southeast Redmond, one at Marymoor Park, and the other in downtown Redmond in the residential and retail core.



SOUND TRANSIT
FEDERAL WAY, WA

2019—IN PROGRESS

FEDERAL WAY LINK EXTENSION

KBA is providing construction management and inspection services for this \$2.45 billion project that adds approximately 7.8 miles of light rail from the Angle Lake Station in the City of SeaTac to the Federal Way City Center. The extension generally parallels SR 99 and I-5 freeway with stations at Kent/Des Moines, South 272nd Star Lake park-and-ride, and the Federal Way Transit Center.



SOUND TRANSIT
BELLEVUE, WA

2017—IN PROGRESS

OPERATIONS AND MAINTENANCE FACILITY - EAST

KBA is providing **Design Build Project Management** Services for this \$242 million project to construct an Operations and Maintenance Facility to store, maintain, and deploy the vehicles associated with the expanding light rail service as the system expands from 16 to 50 miles by 2023. KBA is leading a blended team, providing design review and construction management for the maintenance facility, storage tracks, systems work, and associated features. Our team is providing independent quality assurance of the Design-Builder's QC/QA program.




SOUND TRANSIT
SEATTLE, WA

2013—2021

NORTHGATE LINK LIGHT RAIL

KBA provided construction management and inspection services for the construction of the \$440 million Northgate Link Light Rail extension. This **GC/CM** and **D-B-B** project constructs two 4.3-mile long segmentally lined, twin-bored, 21-foot diameter tunnels using EPB TBMs. Work also includes the installation of 23 cross passages excavated at intervals between the bored tunnels using sequential excavation methods, between Maple Leaf Portal and the University of Washington Station. Project elements include two underground stations, an elevated station and guideway, a parking garage, and trackwork.

 2018 Tunnel Achievement Award for Project Excellence, Tunnel Business Magazine



SOUND TRANSIT
SEATTLE, WA

2015—2017

SOUTH 200TH LINK EXTENSION PARKING GARAGE

KBA provided construction management and inspection services for this \$30 million **Design-Build** project. The 7-story, open-air parking structure contains 1,050 parking stalls, commercial retail space, and an architectural metal-tube façade. The parking garage is a concrete cast-in-place structure, the exterior finished with an artistic metal translucent screen. A new water quality and detention vault was provided for the garage and the mechanical, electrical, and fire protection systems are integrated with a building management system. Station Area Roadway upgrades included reconstruction of South 200th Street from International Boulevard to Des Moines Creek, installing a three-sided culvert bridge for fish passage, new utilities, and sidewalks, and concrete cantilever retaining walls.



SOUND TRANSIT
MUKILTEO, WA

2012—2016

MUKILTEO SOUNDER COMMUTER RAIL STATION, SOUTH PLATFORM

KBA provided construction management and inspection services for this \$6.4 million Bid-Build project to construct a new south platform at Mukilteo Station. Project work included a new platform within the BNSF Railroad right-of-way, with 24-inch drilled shafts, shoring with Cooper E-80 loadings, concrete station platform, two steel and glass stair towers, elevators, overcrossing (above two live BNSF main lines), landscaping, and art elements. KBA staff is knowledgeable of BNSF's rules and regulations regarding work near live tracks, and proactively work with the contractor to maintain a safe work environment.



KBA positively impacts the health and safety of communities through our contribution to water and wastewater projects. KBA works with cities, counties, public utility districts, and private developers in the proper construction of water supply, treatment and storage facilities, as well as wastewater conveyance, collection, and treatment systems.

WATER AND WASTEWATER



SEATTLE PUBLIC UTILITIES
SEATTLE, WA

2020—IN PROGRESS

CONSTRUCTION MANAGEMENT ON-CALL

KBA is providing construction management services under an on-call contract for sewer projects that include the rehabilitation of 131 existing storm and sanitary sewer segments, with diameters ranging from 8 inches to 36 inches, via cured-in-place pipe (CIPP) installation method with fiberglass lining installation with curing by ultraviolet light; and replacement of 1,300 LF of existing 8-inch, 15-inch, and 24-inch pipes with new vitrified clay pipe (VCP) via traditional open-cut construction methods.



CITY OF OAK HARBOR
OAK HARBOR, WA

2015—2021

CLEAN WATER FACILITY - HEAVY CIVIL GC/CM

KBA provided construction management and inspection services for this \$150 million heavy civil **GC/CM** project that replaced two aging wastewater treatment facilities with a new clean water treatment facility that meets modern standards for reliability and performance. This project provided the construction of a new membrane bioreactor (MBR) facility to replace the City's existing facilities (lagoon and rotating biological contactor), providing continued reliable wastewater service to the community of Oak Harbor while protecting and preserving the surrounding environment (Puget Sound, Oak Harbor, and Crescent Harbor).



CITY OF MERCER ISLAND
MERCER ISLAND, WA

2019—2020

CONSTRUCTION MANAGEMENT ON-CALL

KBA provided program management and construction management services to Mercer Island Public Works Department to manage a complex, multi-stage, multi-vendor integration of a new SCADA system with future, new, and existing pump stations. As these pump stations and other improvements were implemented, the City used KBA's CM capabilities to construct these improvements.

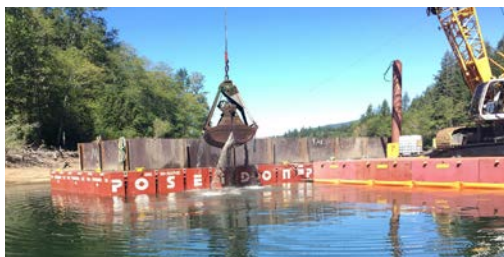


CITY OF PORT ANGELES
PORT ANGELES, WA

2014—2017

COMBINED SEWER OVERFLOW

KBA provided office engineering services for the \$14.9 million Phase 2 CSO Project that is part of the City's approved CSO Reduction Program. The project increased flow conveyance capacity in the mainlines from downtown to the existing wastewater treatment plant to accommodate peak flows from storm events; increased the capacity of the treatment plant; utilized an existing above-ground storage tank to store excess flows; and increased the capacity of the treatment plant outfall system. Elements of the work included construction of an above and below grade pump station building for housing various mechanical, process, and electrical equipment; piping systems; new gravity sewer and storm drain; replacement of sidewalk, curb, and road surfaces as required; and traffic control.



SEATTLE PUBLIC UTILITIES
NORTH BEND, WA

2015

MORSE LAKE PUMP PLANT

KBA provided construction management and inspection services for this \$16.3 million project, located entirely within the secured Cedar River Municipal Watershed. The facility improves water transfer from Chester Morse Lake into the lower watershed, thereby providing the capability to meet water system demands and in-stream flows during dry conditions. KBA successfully met project challenges including completing all work while maintaining a fully operational water supply reservoir, with emphasis on worker safety and water quality protection.

 2017 Best Project, Water/Environment, ENR Northwest



SEATTLE PUBLIC UTILITIES
RAVENSDALE, WA

2014—2015

LANDSBURG FACILITIES AND CHLORINATION PROJECT

KBA provided construction management and inspection services for this \$6.9 million project that constructed a new 4,500 SF Operations Center Building with control room, locker rooms, offices, and water lab. The project also replaced the existing chlorine gas system with a liquid sodium hypochlorite system. Work included a new antenna tower, foundation, grounding system, and antenna system; upgrade of the supervisory control and data acquisition monitoring system; and construction of new concrete drives, pervious concrete parking area, and turf overflow parking.

EXPERTISE *Quality Assurance, Constructability, Land Development, Buildings, etc.*



In addition to our core construction management and inspection services, KBA provides value-added services including Quality Assurance, Constructability Review, Change Order Management, and Risk Management on a variety of project types. KBA also successfully manages the construction of buildings for private developers as well as municipal facilities for public agencies.

ADDITIONAL PROJECTS



SEATTLE DOT
SEATTLE, WA

2020—IN PROGRESS

DELRIIDGE RAPIDRIDE H LINE, CONSTRUCTABILITY REVIEW

KBA provided constructability review during design for this project that constructs infrastructure for a Bus Rapid Transit network from the West Seattle Bridge to SW Henderson Street. Work includes construction of RapidRide transit stops with shelters, tech pylons, lighting, ORCA readers, and amenities; addition of a southbound protected bike lane; and reconstruction of concrete pavement.



STILLAGUAMISH TRIBE
SNOHOMISH COUNTY, WA

2020—IN PROGRESS

KACKMAN CREEK CULVERT REPLACEMENT

KBA is providing construction management and inspection services for this fish enhancement project where Kackman Creek runs beneath 55th Avenue NE. Services originally included project inspection and documentation but have expanded to also include oversight and management of the client's consultant team, including the EOR/designer, geotechnical, and environmental consultants. The project replaces an existing 48-inch culvert with a 110-foot bridge and enhances the creek's riparian zone. Specific elements include driven piles; concrete columns, abutments, girders, and deck; soldier pile retaining walls concrete fascia; earthwork; and plantings.



PULTE HOMES
SNOQUALMIE, WA

2019—2021

PULTE HOMES, PERMITTING AND CLOSEOUT SERVICES

KBA worked with the developer, City of Snoqualmie, and public utilities to complete the closeout of City of Snoqualmie bonds associated with the development of the Snoqualmie Ridge Master Planned Community. Bonds included performance and maintenance for roadways, utilities, landscaping, and sensitive areas restoration and monitoring. Bond release was predicated on the timely completion of punch list items.



US DOT
DARRINGTON, WA

2018—2019

DARRINGTON EMERGENCY REPAIRS

KBA developed a Quality Control (QC) Plan and provided QC Manager Services for this \$2.2 million project to repair 17 individual US Forest Service roads, near Darrington, WA. Sites had been washed out or otherwise rendered impassable. General repairs included installation of upsized corrugated metal culverts/ large arched culvert, and backfill with available near-site granular materials. Installation of concrete, riprap, and woody debris was also included in the work.



CITY OF ISSAQUAH
ISSAQUAH, WA

2016—2017

SE 62ND ST EXTENSION IMPROVEMENTS, CONSTRUCTABILITY REVIEW

KBA provided constructability and plan submittal review for the roadway and bridge plans at the 60%, 65%, 90%, 100% design level. KBA collaborated with the Design Engineer to provide input to improve the level of constructability of the project, which helped to create plans that were biddable, buildable, and maintainable for the City. KBA delivered comments on the Specifications that clarified the intent of the design and provided bid items to limit over-runs in erosion control. When the final bid package was put to ad, the awarded contract was approximately \$6 million under the Design Engineer's estimate.



WA STATE DOT
SEATTLE/MEDINA, WA

2012—2017

SR 520 BRIDGE REPLACEMENT & HOV PROGRAM, RISK ANALYSIS

KBA provided change order management and risk analysis on this \$753 million, high-profile design-build project that replaces the existing SR 520 floating bridge, and relieves congestion by improving transit and HOV operations. Major construction work elements included: a new six-lane floating bridge, with HOV lanes, bicycle/pedestrian facilities, and the ability to accommodate future light rail.



UNIVERSITY OF WASHINGTON
SEATTLE, WA

2015—2016

BURKE-GILMAN TRAIL IMPROVEMENTS, PHASE 1

KBA provided construction management and inspection for the Burke-Gilman Trail within the UW campus. The project widened the trail; added dedicated bicycle and pedestrian lanes; installed new lights and more blue emergency phones; improved trail intersections and ADA access; created mixing zones with amenities such as benches, trash cans, and bicycle parking; and improved sightlines. Grant funding came from the Puget Sound Regional Council (PSRC) through the federal Congestion Mitigation and Air Quality (CMAQ) program.





KBA SERVICE AREAS

CONSTRUCTION MANAGEMENT

Contract Administration and Change Management
Inspection, Documentation and Quality Assurance
Project Scheduling, Controls and Reporting

PROJECT/PROGRAM MANAGEMENT

Program Planning
Design Phase Services
Pre-Construction Services

SPECIALTY SERVICES

Constructability/Biddability
Consulting/Advising
Teaching/Training

KBA is an Equal Opportunity Employer and is committed to creating a work environment that is free of discrimination and unlawful harassment and full of opportunity for all with a workforce that reflects the region's diversity. KBA does not discriminate against disabled applicants and employees who will be afforded reasonable accommodation.

KBACM.com



TEAMS THAT **BUILD TRUST**

Bellevue Main Office:
425 455 9720

Seattle Office:
425 214 5082

Mount Vernon Office:
425 214 5064



KBACM.com